

YOUR **SEATING** SOLUTION SPECIALISTS



CLERICAL
SEATING

AUSTRALIAN MADE & OWNED



Features:

- AFRDI Level 6 certification.
- Antibacterial moulded seat foam with air cell support.
- Antibacterial moulded back foam.
- Back contour and lumbar support.
- Black Class 4 height adjustable gas lift with cover.
- Black nylon base and black castors.
- 3-lever fully ergonomic heavy duty mechanism with seat tension and manual back height adjustment.

Seat and back:

- Fully upholstered seat.
- Upholstered inner back with polypropylene outer back.

Options:

- Adjustable or fixed arms - Not tested by AFRDI (refer to p. 35).
- Chrome base - BASE700C.
- Chrome gas lift - GL140C.
- Choice of fabric, vinyl or leather (refer to p. 38).
- Drafting kit - Kit is not tested by AFRDI (refer to p. 36).
- Medium back - ADAPT01.
- Seat slide - MECHSLID.
- PU Soft wheel castors - CASTSW.

Weight:

- 120kg.

Warranty:

- 6 year.

ADAPT02 - High Back
Shown with optional seat slide





AS02 - High Back

Features:

- AFRDI certified components.
- GECA certified foam.
- Antibacterial commercial grade foam.
- Back lumbar support.
- Black Class 4 height adjustable gas lift with cover.
- Black nylon base and black castors.
- Moulded back foam (High back only).
- 3-lever fully ergonomic heavy duty mechanism with seat tension and manual back height adjustment.

Seat and back:

- Upholstered inner back with polypropylene outer back.
- Upholstered seat with polypropylene under seat cover.

Options:

- Adjustable or fixed arms (refer to p. 35).
- Alternate black and chrome bases (refer to p. 35).
- Alternate black and chrome gas lifts (refer to p. 36).
- Alternate castors or glides (refer to p. 36).
- Choice of fabric, vinyl or leather (refer to p. 38).
- Drafting kit (refer to p. 36).
- Heavy duty kit to 150kg - HDKIT (refer to p. 35).
- Medium back - AS01.
- Ratchet back height adjustment - MECH/HD/RAT.
- Seat slide - MECHSLID.

Weight:

- 120kg.

Warranty:

- 5 year.



*100% of the foams in this product are Good Environmental Choice Australia Certified





ASPEN

Features:

- AFRDI certified components.
- GECA certified foam.
- Antibacterial commercial grade foam.
- Black Class 4 height adjustable gas lift with cover.
- Black nylon base and black castors.
- Cosmetic seat and back stitching.
- 3-lever fully ergonomic heavy duty mechanism with seat tension and manual back height adjustment.

Seat and back:

- Fully upholstered seat and back.

Options:

- Adjustable or fixed arms (refer to p. 35).
- Alternate black and chrome bases (refer to p. 35).
- Alternate black and chrome gas lifts (refer to p. 36).
- Alternate castors or glides (refer to p. 36).
- Choice of fabric, vinyl or leather (refer to p. 38).
- Drafting kit (refer to p. 36).
- Heavy duty kit to 150kg - HDKIT (refer to p. 35).
- Ratchet back height adjustment - MECH/HD/RAT.
- Seat slide - MECHSLID.

Weight:

- 120kg.

Warranty:

- 5 year.



*100% of the foams in this product are Good Environmental Choice Australia Certified





Features:

- AFRDI certified components.
- Antibacterial commercial grade foam.
- Back contour with lumbar support.
- Black Class 4 height adjustable gas lift with cover.
- Black base and black castors.
- Moulded seat foam.
- 3-lever fully ergonomic heavy duty mechanism with seat tension and manual back height adjustment.

Seat and back:

- Fully upholstered seat and back.

Options:

- Adjustable or fixed arms (refer to p. 35).
- Alternate black and chrome bases (refer to p. 35).
- Alternate black and chrome gas lifts (refer to p. 36).
- Alternate castors or glides (refer to p. 36).
- Choice of fabric, vinyl or leather (refer to p. 38).
- Drafting kit (refer to p. 36).
- Heavy duty kit to 150kg - HDKIT (refer to p. 35).
- Ratchet back height adjustment - MECH/HD/RAT.
- Seat slide - MECHSLID.

Weight:

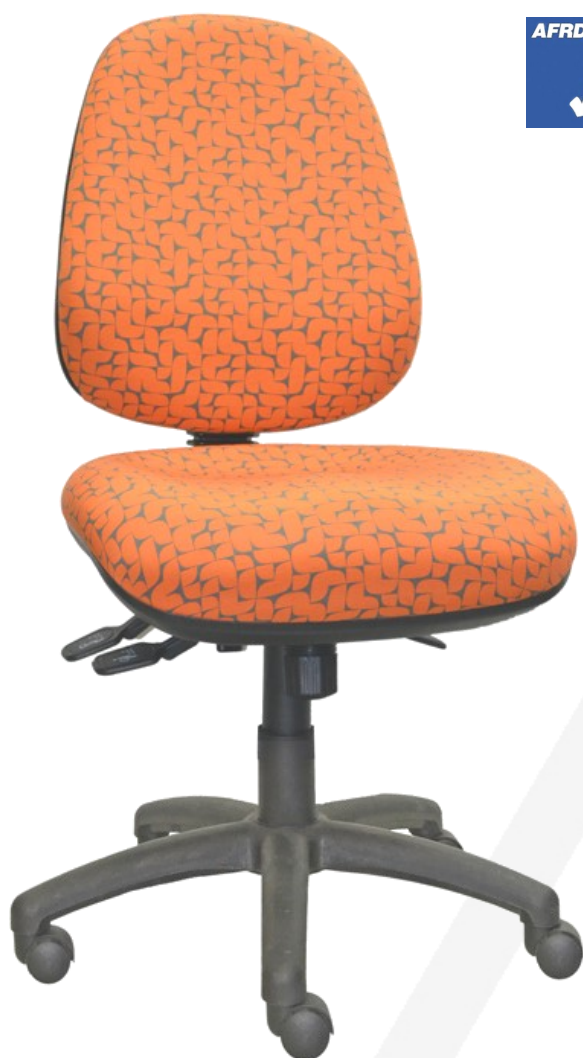
- 120kg.

Warranty:

- 5 year.

BALANZ





Features:

- AFRDI Level 6 certification.
- Antibacterial commercial grade moulded seat and back foam.
- Back contour with lumbar support.
- Black Class 4 height adjustable gas lift with cover.
- Black nylon base and black castors.
- 3-lever fully ergonomic heavy duty mechanism with seat tension and manual back height adjustment.

Seat and back:

- Upholstered inner back with polypropylene outer back.
- Upholstered seat with polypropylene under seat cover.

Options:

- Adjustable or fixed arms - Not tested by AFRDI (refer to p. 35).
- Chrome base - BASE700C.
- Chrome gas lift - GL140C.
- Choice of fabric, vinyl or leather (refer to p. 38).
- Drafting kit - Kit is not tested by AFRDI (refer to p. 36).
- Medium back - A01LS.
- Seat slide - MECHSLID.
- PU Soft wheel castors - CASTSW.

Weight:

- 120kg.

Warranty:

- 5 year.

A02LS - High Back





Features:

- AFRDI Level 6 certification.
- Antibacterial commercial grade moulded seat and back foam.
- Back contour with lumbar support.
- Chrome base with PU soft wheel castors.
- Black Class 4 height adjustable gas lift.
- Cosmetic seat and back stitching.
- Deluxe seat and back foam.
- 3-lever fully ergonomic heavy duty mechanism with seat tension and manual back height adjustment.

Seat and back:

- Upholstered inner back with polypropylene outer back.
- Upholstered seat with polypropylene under seat cover.

Options:

- Adjustable or fixed arms - Not tested by AFRDI (refer to p. 35).
- Black base - BASE640B/2.
- Black castors - CAST50.
- Chrome gas lift - GL140C.
- Choice of fabric, vinyl or leather (refer to p. 38).
- Drafting kit - Kit is not tested by AFRDI (refer to p. 36).
- Medium back - A01DEL.
- Seat slide - MECHSLID.

Weight:

- 120kg.

Warranty:

- 5 year.

A02DEL - High Back
Shown with optional seat slide



BALCOMBE MESH BACK

8



Features:

- AFRDI certified components.
- Adjustable back lumbar support.
- Antibacterial commercial grade moulded seat foam.
- Black Class 4 height adjustable gas lift with cover.
- Black nylon base and black castors.
- 3-lever fully ergonomic heavy duty mechanism with seat tension.

Seat and back:

- Mesh back.
- Upholstered seat with polypropylene under seat cover.

Options:

- Adjustable or fixed arms (refer to p. 35).
- Alternate black and chrome bases (refer to p. 35).
- Alternate black and chrome gas lifts (refer to p. 36).
- Alternate castors or glides (refer to p. 36).
- Choice of fabric, vinyl or leather (refer to p. 38).
- Drafting kit (refer to p. 36).
- Heavy duty kit to 150kg - HDKIT (refer to p. 35).
- Seat slide - MECHSLID.

Weight:

- 120kg.

Warranty:

- 5 year.

A02M





A02MW

Features:

- AFRDI certified components.
- Adjustable back lumbar.
- Antibacterial commercial grade moulded seat foam.
- Black Class 4 height adjustable gas lift with cover.
- Black nylon base and black castors.
- 3-lever fully ergonomic heavy duty mechanism with ratchet back height adjustment.

Seat and back:

- Mesh back.
- Upholstered seat with polypropylene under seat cover.

Options:

- Adjustable or fixed arms (refer to p. 35).
- Alternate black and chrome bases (refer to p. 35).
- Alternate black and chrome gas lifts (refer to p. 36).
- Alternate castors or glides (refer to p. 36).
- Choice of fabric, vinyl or leather (refer to p. 38).
- Drafting kit (refer to p. 36).
- Heavy duty kit to 150kg - HDKIT (refer to p. 35).
- Seat slide - MECHSLID.

Weight:

- 120kg.

Warranty:

- 5 year.





Features:

- AFRDI Level 6 certification.
- GECA certified foam.
- Antibacterial back foam.
- Back contour with lumbar support.
- Black Class 4 height adjustable gas lift with cover.
- Black nylon base and black castors.
- Moulded seat and back foam (High back only).
- Seat slide.
- 3-lever fully ergonomic heavy duty mechanism with seat tension and manual back height adjustment.

Seat and back:

- Upholstered inner back with polypropylene outer back.
- Upholstered seat with polypropylene under seat cover.

Options:

- Adjustable or fixed arms - Not tested by AFRDI (refer to p. 35).
- Chrome base - BASE700C.
- Chrome gas lift - GL140C.
- Choice of fabric, vinyl or leather (refer to p. 38).
- Drafting kit - Kit is not tested by AFRDI (refer to p. 36).
- Medium back - BEL01.
- Soft wheel castors - CASTSW.

Weight:

- 120kg.

Warranty:

- 5 year.

BEL02 - High Back



*100% of the foams in this product are Good Environmental Choice Australia Certified





B03 - High Back

Features:

- AFRDI certified components.
- GECA certified foam.
- Antibacterial commercial grade foam.
- Black Class 4 height adjustable gas lift with cover.
- Black nylon base and black castors.
- 3-lever fully ergonomic mechanism with manual back height adjustment.

Seat and back:

- Upholstered inner back with polypropylene outer back.
- Upholstered seat with polypropylene under seat cover.

Options:

- Additional lumbar support.
- Adjustable or fixed arms (refer to p. 35).
- Alternate black and chrome bases (refer to p. 35).
- Alternate black and chrome gas lifts (refer to p. 36).
- Alternate castors or glides (refer to p. 36).
- Choice of fabric, vinyl or leather (refer to p. 38).
- Drafting kit (refer to p. 36).
- Heavy Duty Kit to 150kg - HDKIT2 (refer to p. 35).
- Medium Back - B02.
- HD mech/ratchet back height adjustment - MECH/HD/RAT.
- Seat slide - MECHSLID.

Weight:

- 95kg.

Warranty:

- 3 year.



*100% of the foams in this product are Good Environmental Choice Australia Certified





CHA02 - High Back

Features:

- AFRDI certified components.
- GECA certified foam.
- Antibacterial commercial grade foam.
- Back contour with lumbar support.
- Black Class 4 height adjustable gas lift with cover.
- Black nylon base and black castors.
- Moulded seat and back foam.
- 3-lever fully ergonomic heavy duty mechanism with seat tension and manual back height adjustment.

Seat and back:

- Upholstered inner back with polypropylene outer back.
- Upholstered seat with polypropylene under seat cover.

Options:

- Adjustable or fixed arms (refer to p. 35).
- Alternate black and chrome bases (refer to p. 35).
- Alternate black and chrome gas lifts (refer to p. 36).
- Alternate castors or glides (refer to p. 36).
- Choice of fabric, vinyl or leather (refer to p. 38).
- Drafting kit (refer to p. 36).
- Heavy duty kit to 150kg - HDKIT (refer to p. 35).
- Medium Back - CHA01.
- Ratchet back height adjustment - MECH/HD/RAT.
- Seat slide - MECHSLID.

Weight:

- 120kg.

Warranty:

- 5 year.



*100% of the foams in this product are Good Environmental Choice Australia Certified





H04 - High Back

Features:

- AFRDI certified components.
- GECA certified foam.
- Antibacterial commercial grade moulded seat and back foam.
- Back lumbar support.
- Black Class 4 height adjustable gas lift with cover.
- Black nylon base and black castors.
- 3-lever fully ergonomic mechanism with manual back height adjustment.

Seat and back:

- Upholstered inner back with polypropylene outer back.
- Upholstered seat with polypropylene under seat cover.

Options:

- Adjustable or fixed arms (refer to p. 35).
- Alternate black and chrome bases (refer to p. 35).
- Alternate black and chrome gas lifts (refer to p. 36).
- Alternate castors or glides (refer to p. 36).
- Choice of fabric, vinyl or leather (refer to p. 38).
- Drafting kit (refer to p. 36).
- Heavy Duty Kit to 150kg - HDKIT2 (refer to p. 35).
- Medium back - H03.
- HD mech/ratchet back height adjustment - MECH/HD/RAT.
- Seat slide - MECHSLID.

Weight:

- 95kg.

Warranty:

- 3 year.



*100% of the foams in this product are Good Environmental Choice Australia Certified





H05

Features:

- AFRDI certified components.
- GECA certified foam.
- Antibacterial commercial grade foam.
- Back lumbar support.
- Black Class 4 height adjustable gas lift with cover.
- Black nylon base and black castors.
- Cosmetic seat and back stitching.
- 3-lever fully ergonomic heavy duty mechanism with seat tension and manual back height adjustment.

Seat and back:

- Upholstered inner back with polypropylene outer back.
- Fully upholstered seat.

Options:

- Adjustable or fixed arms (refer to p. 35).
- Alternate black and chrome bases (refer to p. 35).
- Alternate black and chrome gas lifts (refer to p. 36).
- Alternate castors or glides (refer to p. 36).
- Choice of fabric, vinyl or leather (refer to p. 38).
- Drafting kit (refer to p. 36).
- Heavy duty kit to 150kg - HDKIT (refer to p. 35).
- Ratchet back height adjustment - MECH/HD/RAT.
- Seat slide - MECHSLID.

Weight:

- 120kg.

Warranty:

- 5 year.



*100% of the foams in this product are Good Environmental Choice Australia Certified





Features:

- AFRDI certified components.
- GECA certified foam.
- Antibacterial commercial grade foam.
- Back contour with lumbar support.
- Black Class 4 height adjustable gas lift.
- Chrome narrow leg base with s/steel hooded castors.
- Cosmetic seat and back stitching.
- Moulded seat foam.
- 3-lever fully ergonomic heavy duty mechanism with seat tension and manual back height adjustment.

Seat and back:

- Fully upholstered seat and back.

Options:

- Adjustable or fixed arms (refer to p. 35).
- Alternate black and chrome bases (refer to p. 35).
- Alternate black and chrome gas lifts (refer to p. 36).
- Alternate castors or glides (refer to p. 36).
- Choice of fabric, vinyl or leather (refer to p. 38).
- Drafting kit - DKIT (refer to p. 36).
- Heavy duty kit to 150kg - HDKIT (refer to p. 35).
- Medium back - LOGMB.
- Ratchet back height adjustment - MECH/HD/RAT.
- Seat slide - MECHSLID.

Weight:

- 120kg.

Warranty:

- 5 year.

LOGHB - High Back

Shown with optional adjustable arm - ARM/SAFA



*100% of the foams in this product are Good Environmental Choice Australia Certified





LUC02 - High Back
Shown with optional seat slide

Features:

- AFRDI certified components.
- GECA certified foam.
- Antibacterial back foam.
- Back contour with lumbar support.
- Chrome Class 4 height adjustable gas lift.
- Chrome narrow leg base with s/steel hooded castors.
- Moulded seat foam.
- 3-lever fully ergonomic heavy duty mechanism with seat tension and manual back height adjustment.

Seat and back:

- Upholstered inner back with polypropylene outer back.
- Upholstered seat with polypropylene under seat cover.

Options:

- Adjustable or fixed arms (refer to p. 35).
- Alternate black and chrome bases (refer to p. 35).
- Alternate black and chrome gas lifts (refer to p. 36).
- Alternate castors or glides (refer to p. 36).
- Choice of fabric, vinyl or leather (refer to p. 38).
- Drafting kit (refer to p. 36).
- Heavy duty kit to 150kg - HDKIT (refer to p. 35).
- Medium back - LUC01.
- Ratchet back height adjustment - MECH/HD/RAT.
- Seat slide - MECHSLID.

Weight:

- 120kg.

Warranty:

- 5 year



*100% of the foams in this product are Good Environmental Choice Australia Certified





Features:

- **GECA** certified foam.
- Antibacterial commercial grade foam.
- Black base and chrome castors.
- Chrome Class 4 height adjustable gas lift.
- Cosmetic stitching.
- One piece shell.
- Single lever ergonomic swivel mechanism.

Seat and back:

- Fully upholstered.

Options:

- Alternate black and chrome bases (refer to p. 35).
- Alternate black and chrome gas lifts (refer to p. 36).
- Alternate castors or glides (refer to p. 36).
- Choice of fabric, vinyl or leather (refer to p. 38).
- Drafting kit (refer to p. 36).

Weight:

- 120kg.

Warranty:

- 5 year.

MOONT



*100% of the foams in this product are Good Environmental Choice Australia Certified





Features:

- **GECA** certified foam.
- Antibacterial commercial grade foam.
- Black narrow leg base with s/steel hooded castors.
- Black polypropylene arms.
- Chrome Class 4 height adjustable gas lift.
- Cosmetic stitching.
- One piece shell.
- Single lever ergonomic 3 position syncro mechanism with tension adjustment.

Seat and back:

- Fully upholstered.

Options:

- Alternate black and chrome bases (refer to p. 35).
- Alternate black and chrome gas lifts (refer to p. 36).
- Alternate castors or glides (refer to p. 36).
- Choice of fabric, vinyl or leather (refer to p. 38).

Weight:

- 120kg.

Warranty:

- 5 year.

MOONEXR2



*100% of the foams in this product are Good Environmental Choice Australia Certified





Features:

- BIFMA certification.
- Adjustable "T" arms (as shown).
- Adjustable back lumbar.
- Aluminium narrow leg base with black castors.
- Chrome Class 3 height adjustable gas lift.
- Moulded seat foam.
- Seat slide.
- Single lever ergonomic syncro mechanism with tension adjustment.

Seat and back:

- Mesh back.
- Upholstered seat with polypropylene under seat cover.

Options:

- Choice of fabric, vinyl or leather (refer to p. 38).
- Oxford Mesh Budget - OXFMBUD.
- (black base, black castors, black gas, no seat slide).
- Removable arms.

Weight:

- 120kg.

Warranty:

- 5 year.

OXFMBUD/C





Features:

- GECA certified foam.
- Adjustable back lumbar.
- Aluminium narrow leg base with black castors.
- Black Class 4 height adjustable gas lift with cover.
- Moulded seat foam.
- Seat Slide.
- 2-lever ergonomic syncro mechanism with tension adjustment.

Seat and back:

- Mesh back.
- Upholstered seat with polypropylene under seat cover.

Options:

- Choice of fabric, vinyl or leather (refer to p. 38).
- Removable arms - OXFMDL.

Weight:

- 120kg.

Warranty:

- 5 year.

OXFMDL/A



*100% of the foams in this product are Good Environmental Choice Australia Certified





PUD
With drafting kit

Features:

- Chrome Class 4 height adjustable gas lift.
- Black nylon base with chrome look castors.
- 3-lever fully ergonomic heavy duty mechanism with tension adjustment.

Seat and back:

- Black polyurethane seat and back.

Models:

- **PU** model with standard seat and back.
- **PUL** model with larger seat and back.
- **PUSQ** model with square design seat and back.

Options:

- Alternate black and chrome bases (refer to p. 35).
- Alternate black and chrome gas lifts (refer to p. 36).
- Alternate castors or glides (refer to p. 36).
- Drafting kit - DKIT (refer to p. 36).
- Seat slide - MECHSLID.

Weight:

- 120kg.

Warranty:

- 3 year.



PU



PUL



PUSQ



RID02 - High Back
Shown with optional seat slide

Features:

- AFRDI certified components.
- GECA certified foam.
- Back contour support.
- Black Class 4 height adjustable gas lift with cover.
- Chrome base and black castors.
- Commercial grade moulded seat and back foam.
- 3-lever fully ergonomic heavy duty mechanism with seat tension and manual back height adjustment.

Seat and back:

- Upholstered inner back with polypropylene outer back.
- Upholstered seat with polypropylene under seat cover.

Options:

- Adjustable or fixed arms (refer to p. 35).
- Alternate black and chrome bases (refer to p. 35).
- Alternate black and chrome gas lifts (refer to p. 36).
- Alternate castors or glides (refer to p. 36).
- Choice of fabric, vinyl or leather (refer to p. 38).
- Drafting kit (refer to p. 36).
- Heavy duty kit to 150kg - HDKIT (refer to p. 35).
- Medium Back - RID01.
- Ratchet back height adjustment - MECH/HD/RAT.
- Seat Slide - MECHSLID.

Weight:

- 120kg.

Warranty:

- 5 year.



*100% of the foams in this product are Good Environmental Choice Australia Certified





Features:

- GECA certified foam.
- Back contour support.
- Chrome Class 4 height adjustable gas lift.
- Chrome narrow leg base and s/steel hooded castors.
- Commercial grade moulded seat and back foam.
- Larger seat profile.
- Seat slide.
- 2-lever ergonomic syncro mechanism with ratchet back height adjustment.

Seat and back:

- Upholstered inner back with polypropylene outer back.
- Upholstered seat with polypropylene under seat cover.

Options:

- Adjustable or fixed arms (refer to p. 35).
- Alternate black and chrome bases (refer to p. 35).
- Alternate black and chrome gas lifts (refer to p. 36).
- Alternate castors or glides (refer to p. 36).
- Choice of fabric, vinyl or leather (refer to p. 38).
- Drafting kit (refer to p. 36).
- Heavy duty kit to 150kg - HDKIT (refer to p. 35).
- Medium back - RIDDEL01.

Weight:

- 120kg.

Warranty:

- 5 year.

RIDDEL02 - High Back
Shown with optional adjustable arm - ARM/SAFA



*100% of the foams in this product are Good Environmental Choice Australia Certified



**Features:**

- Black Class 4 height adjustable gas lift.
- Black moulded polypropylene shell.
- Black pitch base and black castors.
- PU arm pads.
- 2-lever tilt mechanism with tension adjustment.

Seat and back:

- Mesh back.
- Upholstered black fabric seat with polypropylene under seat cover.

Weight:

- 110kg.

Warranty:

- 5 year.

ROCK



SHIFT 160 KG HEAVY DUTY

25



Features:

- AFRDI 142 Rated Load.
- GECA certified foam.
- Back contour with lumbar support.
- Black Class 4 height adjustable gas lift with cover.
- Black nylon base and black castors.
- Commercial grade foam moulded seat and back foam.
- Rated for 160kg multiple operations.
- 3-lever fully ergonomic heavy duty mechanism with ratchet back height adjustment.

Seat and back:

- Upholstered inner back with polypropylene outer back.
- Upholstered seat with polypropylene under seat cover.

Options:

- Adjustable or fixed arms - Not tested by AFRDI (refer to p. 35).
- Chrome base.
- Choice of fabric, vinyl or leather (refer to p. 38).
- High profile contoured anti-bacterial moulded seat foam.
- Soft wheel castors (CASTSW).
- Weave mesh back with adjustable lumbar.

Weight:

- 160kg.

Warranty:

- 5 year.



SHIFT160



*100% of the foams in this product are Good Environmental Choice Australia Certified



PROUDLY AUSTRALIAN MADE & OWNED



Features:

- AFRDI Level 6 certification.
- Antibacterial moulded seat foam.
- Antibacterial contoured back foam with lumbar support.
- Chrome Class 4 height adjustable gas lift.
- Chrome base with PU soft wheel castors.
- 3-lever fully ergonomic heavy duty mechanism with seat tension and manual back height adjustment.

Seat and back:

- Fully upholstered seat and back.

Options:

- Adjustable or fixed arms - not tested by AFRDI (refer to p. 35).
- Black base - BASE 640B/2.
- Black castors - CAST50.
- Black gas lift with cover - GL140B.
- Choice of fabric, vinyl or leather (refer to p. 38).
- Drafting kit - Kit is not tested by AFRDI (refer to p. 36).
- Medium back - SON01.
- Seat slide - MECHSLID.

Weight:

- 120kg.

Warranty:

- 5 year.

SON02 - High Back





SONMO2 - High Back

Features:

- AFRDI certified components.
- GECA certified foam.
- Antibacterial commercial grade moulded seat foam.
- Back contour with lumbar support.
- Black Class 4 height adjustable gas lift with cover.
- Black nylon base and black castors.
- 3-lever fully ergonomic heavy duty mechanism with seat tension and manual back height adjustment.

Seat and back:

- Fully upholstered seat.
- Upholstered inner back with polypropylene outer back.

Options:

- Adjustable or fixed arms (refer to p. 35).
- Alternate black and chrome bases (refer to p. 35).
- Alternate black and chrome gas lifts (refer to p. 36).
- Alternate castors or glides (refer to p. 36).
- Choice of fabric, vinyl or leather (refer to p. 38).
- Drafting kit (refer to p. 36).
- Heavy duty kit to 150kg - HDKIT (refer to p. 35).
- Medium back - SONM01.
- Ratchet back height adjustment - MECH/HD/RAT.
- Seat slide - MECHSLID.

Weight:

- 120kg.

Warranty:

- 5 year.



*100% of the foams in this product are Good Environmental Choice Australia Certified





TOSCSER

Features:

- **AFRDI** certified components.
- **GECA** certified foam.
- Antibacterial commercial grade moulded seat foam.
- Black Class 4 height adjustable gas lift with cover.
- Black base and black castors.
- Specifically designed for persons wearing utility belts.
- 3-lever fully ergonomic heavy duty mechanism with seat tension and manual back height adjustment.

Seat and back:

- Fully upholstered back.
- Upholstered seat with polypropylene under seat cover.

Options:

- Adjustable or fixed arms (refer to p. 35).
- Alternate black and chrome bases (refer to p. 35).
- Alternate black and chrome gas lifts (refer to p. 36).
- Alternate castors or glides (refer to p. 36).
- Choice of fabric, vinyl or leather (refer to p. 38).
- Drafting kit (refer to p. 36).
- Heavy duty kit to 150kg - HDKIT (refer to p. 35).
- Ratchet back height adjustment - MECH/HD/RAT.
- Seat slide - MECHSLID.

Weight:

- 120kg.

Warranty:

- 5 year.



*100% of the foams in this product are Good Environmental Choice Australia Certified





TR02 - High Back

Features:

- AFRDI certified components.
- GECA certified foam.
- Antibacterial commercial grade foam.
- Back contour with lumbar support.
- Black Class 4 height adjustable gas lift with cover.
- Black base and black castors.
- Moulded seat foam.
- 3-lever fully ergonomic heavy duty mechanism with seat tension and manual back height adjustment.

Seat and Back:

- Upholstered inner back with polypropylene outer back.
- Upholstered seat with polypropylene under seat cover.

Options:

- Adjustable or fixed arms (refer to p. 35).
- Alternate black and chrome bases (refer to p. 35).
- Alternate black and chrome gas lifts (refer to p. 36).
- Alternate castors or glides (refer to p. 36).
- Choice of fabric, vinyl or leather (refer to p. 38).
- Drafting kit (refer to p. 36).
- Heavy duty kit to 150kg - HDKIT (refer to p. 35).
- Medium back - TR01.
- Ratchet back height adjustment - MECH/HD/RAT.
- Seat slide - MECHSLID.

Weight:

- 120kg.

Warranty:

- 5 year.



*100% of the foams in this product are Good Environmental Choice Australia Certified





Features:

- AFRDI Level 6 certification.
- Black base and black castors.
- Black Class 4 height adjustable gas lift with cover.
- Commercial grade moulded seat foam.
- 3-lever fully ergonomic heavy duty mechanism with seat tension and manual back height adjustment.

Seat and back:

- Mesh back.
- Upholstered black fabric seat with polypropylene under seat cover.

Options:

- Adjustable arms - ARM/VIN (as shown).
- Medium back - VIN01.

Weight:

- 110kg.

Warranty:

- 5 year.

VIN02 - High Back
Shown with optional T arms





Features:

- AFRDI Level 6 certification.
- GECA certified foam.
- Back contour with lumbar support.
- Black base and black castors.
- Black Class 4 height adjustable gas lift with cover.
- Commercial grade moulded seat and back foam.
- Smaller seat profile.
- 3-lever fully ergonomic heavy duty mechanism with seat tension and manual back height adjustment.

Seat and back:

- Upholstered inner back with polypropylene outer back.
- Upholstered seat with polypropylene under seat cover.

Options:

- Adjustable or fixed arms - Not tested by AFRDI (refer to p. 35).
- Chrome base - BASE700C.
- Chrome gas lift - GL140C.
- Choice of fabric, vinyl or leather (refer to p. 38).
- Drafting kit - Kit is not tested by AFRDI (refer to p. 36).
- Medium back - YAR01.
- Seat slide - MECHSLID.
- Ratchet back height adjustment - MECH/HD/RAT.
- PU Soft wheel castors - CASTSW.

Weight:

- 120kg.

Warranty:

- 5 year.

YAR02 - High Back



*100% of the foams in this product are Good Environmental Choice Australia Certified





Features:

- Adjustable "T" arms (horizontal and vertical).
- Back lumbar support.
- Black base and black castors.
- Black height Class 4 adjustable gas lift with cover.
- Commercial grade seat and back foam.
- Cosmetic seat and back stitching.
- 3-lever fully ergonomic heavy duty mechanism with manual back height adjustments.

Seat and back:

- Black leather only.
- Upholstered inner back with polypropylene outer back.
- Upholstered seat with polypropylene under seat cover.

Weight:

- 120kg.

Warranty:

- 5 year.

YORK





Features:

- AFRDI Level 6 certification.
- Black Class 3 height adjustable gas lift.
- Black narrow leg base and castors.
- Commercial grade foam.
- Fixed "T" arms.
- Moulded seat foam.
- Single lever tilt lock mechanism with tension adjustment.

Seat and back:

- Mesh back.
- Upholstered seat with polypropylene under seat cover.

Options:

- Choice of fabric, vinyl or leather (refer to p. 38).
- Removable arms.

Weight:

- 100kg.

Warranty:

- 5 year.

ZOE



BUILD YOUR OWN

AS SIMPLE AS CHOSING YOUR OWN BACK, SEAT & ACCESSORIES

BACKS



BACK-LUCHB



BACK-ADPHB



BACK-H05



BACK-CHHB



BACK-B0HB



BACK-AS0HB



BACKTRINHB



BACK-LOGHB



BACK-A0MW



BACK-BELHB



BACK-ASP



BACK-RIDHB



BACK-BALZ



BACK-A0M

SEATS



SEAT-YAR



SEAT-AOLS



SEAT-H05



SEAT-CH



SEAT-B0



SEAT-BEL



SEAT-ADP



SEAT-LOG



SEAT-H0



SEAT-BALZ



SEAT-AS0



SEAT-ASP



BACK
STYLE



BACK HEIGHT
ADJUSTMENT
(MANUAL OR
RATCHET)



SEAT
STYLE



MECHANISM



GASLIFT



BASE



CASTOR



ACCESSORIES

ARM OPTIONS

Black adjustable arms with polyurethane arm pads



ARMATA T Pad with bracket.



ARMADA D pad with bracket.

Fixed arm options



ARMLOOP Polypropylene Loop with bracket.

Chrome/Black adjustable arms with polyurethane arm pads



ARM/SAFA Flat pad with bracket.



ARM/SAPA Peanut pad with bracket.



ARMTOM Polyurethane Tomahawk arm pad.

BASES



Standard - Black Bases

BASE 600B 600mm Diam. (AFRDI approved)

BASE640B/2 640mm Diam. (AFRDI approved)

BASE700B 700mm Diam. (AFRDI approved)



Standard - Chrome Base

BASE600C 600mm Diam.

BASE700C 700mm Diam. (AFRDI approved)



Narrow Leg Arch - Black Base

BASENL700B 700mm Diam.

Narrow Leg Arch - Chrome Base

BASENL660C 660mm Diam. (AFRDI approved)

HEAVY DUTY KIT - 150KG

HDKIT

140mm Heavy duty gas, Castors and Base (black).



HDKIT2

140mm Heavy duty gas, Castors, Base and 3-lever mechanism.



ACCESSORIES

CASTORS

Black Castors



- CAST50** 50mm Standard - 30kg.
(AFRDI approved).
- CAST60** 60mm Standard - 40kg.
(AFRDI approved).
- CASTF** 50mm Friction - 30kg.
(restricts movement).
- CASTHD** 55mm Heavy Duty - 60kg.
- CASTLB** 50mm Load Brake - 30kg.
(restricts movement when seated).
- CASTMB** 50mm Manual Brake - 30kg.
(manually lockable to stop movement).

Soft Wheel / PU Castors



- CASTSW** 50mm with PU Tread - 30kg.
(AFRDI approved).
- CASTSWF** 50mm Friction with PU Tread - 30kg.
(restricts movement). (AFRDI approved).
- CASTSWLB** 50mm Load Brake with PU Tread - 30kg.
(restricts movement when seated).
- CASTSWULB** 50mm Unload Brake with PU Tread - 30kg.
(restricts movement when unseated).
- CASTMB** 50mm Manual Brake with PU Tread - 30kg.
(manually lockable to stop all movement).

Black Unhooded Castor



- CASTUH** 50mm Unhooded - 30kg.

Chrome Castor



- CASTCHR** 50mm Chrome look Hood & Shroud - 30kg.

Stainless Steel Hooded Castor



- CASTSS** 50mm Polished Stainless Steel Hood - 30kg.

Single Wheel Skate Castor



- CASTSK** 75mm Clear Polyurethane - 60kg (non marking).

Black Glide



- CASTGL** 57mm Diameter.

Chrome Glide



- CASTGLC** 42mm Diameter.
(Suits narrow leg bases).

DRAFTING KITS



- DKIT** 270mm Black Gas & Foot Ring.



- DKIT CHR** 270mm Chrome Gas & Foot Ring.

GAS LIFTS

Gas Lifts - Black



- GL80B** 80mm
- GL100B** 100mm
- GL140B** 140mm
- GL200B** 200mm
- GL270B** 270mm



Gas Lifts - Chrome



- GL80C** 80mm
- GL100C** 100mm
- GL140C** 140mm
- GL200C** 200mm
- GL270C** 270mm



ACCESSORIES

MECHANISMS & SEAT SLIDE

MECH/HD



- Heavy Duty 3-Lever.
- Manual Back Adjustment.
- Tension Adjustment.
- (AFRDI approved).

MECH/STRAP



- Heavy Duty 3-Lever.
- Three Lever with Ratchet Back Adjustment.
- (AFRDI approved).



MECH/HDRAT



- Heavy Duty 3-Lever.
- Ratchet Back Adjustment.
- Tension Adjustment.
- (AFRDI approved).

MECHSLID



- Seat Slider.
- 50 mm Seat Depth Adjustment.
- (AFRDI approved).

OSA products are manufactured to the highest standard and incorporate the following premium materials:

- Commercial grade timber and steel frames.
- Premium commercial grade foam.
- Upholstered covers are overlapped where required to stop fraying.
- Upholstered covers are top stitched for additional strength where required.
- For a complete list of sizes and dimensions please visit www.officeseating.com.au.
- All products are suitable for multiple applications, ranging from but not limited to education, general office, healthcare and hospitality.

Due to our policy of continuous product improvement, OSA Pty Ltd reserves the right to make changes on specifications without notice.

LEGEND



AFRDI Certified
(Australian Furnishing Research and Development Institute)



Antibacterial Foam



Australian Made



GECA Certified
(Good Environmental Choice Australia)



Suggested Weight Capacity



Warranty Period

PROUDLY AUSTRALIAN MADE & OWNED

FABRIC SUPPLIERS

Most commonly used fabric suppliers.



caprice.com.au



sustainablelivingfabrics.com.au



innova.com.au



svenskakj.com.au



instyle.com.au



vyfab.com



laine.com.au



warwick.com.au



macquarietextiles.com.au



wgshowroom.com.au



NSW LEATHER CO. PTY LTD leatherco.com.au



wovenimage.com



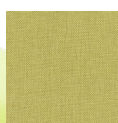
rimfabrics.com.au

OSA HOUSE FABRICS

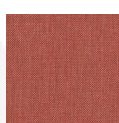
Fabric colours shown are an indication and should only be used as a guide.



Birch



Citrus



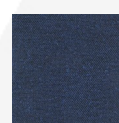
Fire



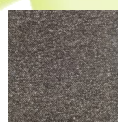
Poppy



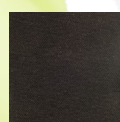
Teal



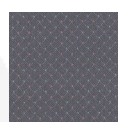
Navy



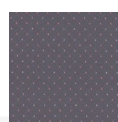
Falcon



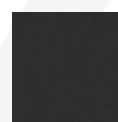
Carbon



Hathaway Charcoal



Hathaway Navy



Black Vinyl

Performance: Heavy Commercial



YOUR **SEATING** SOLUTION SPECIALISTS

OSA PRODUCT RANGE



BEAM SEATING



EDUCATION



EXECUTIVE



HEALTHCARE



HOSPITALITY



OTTOMANS



SOFT FURNISHINGS



STOOLS



VISITOR

NOTES

D I S T R I B U T E D B Y :

OFFICE SEATING AUSTRALIA

A U S T R A L I A N M A D E A N D O W N E D

(03) 9761 7110

www.officeseating.com.au