

YOUR **SEATING** SOLUTION SPECIALISTS



**EXECUTIVE**  
**SEATING**

AUSTRALIAN MADE & OWNED

# CONCEPT VISITOR



**Features:**

- GECA certified foam.
- Aluminium arms with black polyurethane pad.
- Antibacterial foam.
- Dual density commercial grade seat foam.
- Dual inner ply for added strength.

**Frame:**

- Cantilever - tubular steel.
- Chrome finish.

**Seat and back:**

- Fully upholstered.

**Options:**

- Black powder coat finish - CONV (refer to p. 21).
- Choice of fabric, vinyl or leather (refer to p. 22).
- Full curve aluminium arms - ARMALUM (refer to p. 20).
- High back executive - CONH.
- Low back executive - CONL.

**Weight:**

- 120kg.

**Warranty:**

- 5 year.

CONV/C



\*100% of the foams in this product are Good Environmental Choice Australia Certified



# CONCEPT LOW BACK



### Features:

- GECA certified foam.
- Aluminium arms with black polyurethane pad.
- Antibacterial foam.
- Black Class 4 height adjustable gas lift with cover.
- Chrome base with black hooded castors.
- Dual density commercial grade seat foam.
- Dual inner ply for added strength.
- Tilt lock mechanism with tension adjustment.

### Seat and back:

- Fully upholstered.

### Options:

- Alternate black and chrome bases (refer to p. 20).
- Alternate black and chrome gas lifts (refer to p. 21).
- Alternate castors or glides (refer to p. 20).
- Choice of fabric, vinyl or leather (refer to p. 22).
- Front pivot mechanism - MECH/MULTI (refer to p. 21).
- Full curve aluminium arms - ARMALUM (refer to p. 20).
- High back - CONH.
- Visitor - CONV/C.

### Weight:

- 120kg.

### Warranty:

- 5 year.

CONL



\*100% of the foams in this product are Good Environmental Choice Australia Certified



# CONCEPT HIGH BACK



### Features:

- GECA certified foam.
- Aluminium arms with black polyurethane pad.
- Antibacterial foam.
- Black Class 4 height adjustable gas lift with cover.
- Chrome base with black hooded castors.
- Dual density commercial grade seat foam.
- Dual inner ply for added strength.
- Tilt lock mechanism with tension adjustment.

### Seat and back:

- Fully upholstered.

### Options:

- Alternate black and chrome bases (refer to p. 20).
- Alternate black and chrome gas lifts (refer to p. 21).
- Alternate castors or glides (refer to p. 20).
- Choice of fabric, vinyl or leather (refer to p. 22).
- Front pivot mechanism - MECH/MULTI (refer to p. 21).
- Full curve aluminium arms - ARMALUM (refer to p. 20).
- Low back - CONL.
- Visitor - CONV/C.

### Weight:

- 120kg.

### Warranty:

- 5 year.

CONH



\*100% of the foams in this product are Good Environmental Choice Australia Certified



# JUPITER VISITOR



JUPV/C

### Features:

- GECA certified foam.
- Aluminium arms with upholstered arm pads.
- Antibacterial foam.
- Dual inner ply for added strength.
- Tri layer commercial grade back foam with head and back lumbar support.
- Tri layer commercial grade seat foam.

### Frame:

- Cantilever - tubular steel (refer to p. 21)
- Chrome finish.

### Seat and back:

- Fully upholstered.

### Options:

- Aluminium arms with PU pads - ARALUM (refer to p. 20).
- Black powder coat finish - JUPV/B (refer to p. 21).
- Choice of fabric, vinyl or leather (refer to p. 22).
- High back executive - JUPH.
- Low back executive - JUPL.

### Weight:

- 120kg.

### Warranty:

- 5 year.



\*100% of the foams in this product are Good Environmental Choice Australia Certified



# JUPITER LOW BACK



### Features:

- AFRDI Level 6 certification.
- GECA certified foam.
- Aluminium arms with upholstered arm pads.
- Antibacterial foam.
- Black Class 4 height adjustable gas lift with cover.
- Chrome base with PU soft wheel castors.
- Dual inner ply for added strength.
- Tri layer commercial grade back foam with head and back lumbar support.
- Tri layer commercial grade seat foam.
- 5-position front pivot mechanism with tension adjustment.

### Seat and back:

- Fully upholstered.

### Options:

- Alternate black and chrome gas lifts (refer to p. 21).
- Aluminium arms with PU pads - ARALUM (refer to p. 20).
- Black base - BASE700B (refer to p. 20).
- Black castors - CAST50 (refer to p. 20).
- Choice of fabric, vinyl or leather (refer to p. 22).
- High back - JUPH.
- Visitor - JUPV/C.

### Weight:

- 120kg.

### Warranty:

- 5 year.



JUPL



\*100% of the foams in this product are Good Environmental Choice Australia Certified



# JUPITER HIGH BACK



### Features:

- AFRDI Level 6 certification.
- GECA certified foam.
- Aluminium arms with upholstered arm pads.
- Antibacterial foam.
- Black Class 4 height adjustable gas lift with cover.
- Chrome base with PU soft wheel castors.
- Dual inner ply for added strength.
- Tri layer commercial grade back foam with head and back lumbar support.
- Tri layer commercial grade seat foam.
- 5-position front pivot mechanism with tension adjustment.

### Seat and back:

- Fully upholstered.

### Options:

- Alternate black and chrome gas lifts (refer to p. 21).
- Aluminium arms with PU pads - ARALUM (refer to p. 20).
- Black base - BASE700B (refer to p. 20).
- Black castors - CAST50 (refer to p. 20).
- Choice of fabric, vinyl or leather (refer to p. 22).
- Low back - JUPL.
- Visitor - JUPV/C.

### Weight:

- 120kg.

### Warranty:

- 5 year.



JUPH

\*100% of the foams in this product are Good Environmental Choice Australia Certified





**Features:**

- GECA certified foam.
- Antibacterial foam.
- Back lumbar support.
- Black polypropylene arm pads.
- Commercial grade seat and back foam.
- Dual inner ply for added strength.

**Frame:**

- Cantilever - tubular steel.
- Chrome finish.

**Seat and back:**

- Fully upholstered.

**Options:**

- Choice of fabric, vinyl or leather (refer to p. 22).

**Weight:**

- 120kg.

**Warranty:**

- 5 year.

**LUXO**



\*100% of the foams in this product are Good Environmental Choice Australia Certified





# MAVERICK EXECUTIVE



#### Features:

- Aluminium arms with upholstered leather look pad.
- Aluminium narrow leg base with soft wheel castors.
- Black PU leather look vinyl.
- Chrome class 4 height adjustable gas lift.
- Cosmetic stitching.
- 4-position knee tilt synchro mechanism with tension adjustment.

#### Seat and back:

- Fully upholstered.

#### Weight:

- 120kg

#### Warranty:

- 5 year.

MAVHB





PLBV/C

#### Features:

- GECA certified foam.
- Aluminium arms with polyurethane arm pads.
- Antibacterial foam.
- Cosmetic back stitching.
- Commercial grade seat and back foam.
- Dual inner ply for added strength.

#### Frame:

- Cantilever - tubular steel (refer to p. 21).
- Chrome finish.

#### Seat and back:

- Fully upholstered.

#### Options:

- Black powder coat finish - PLBV (refer to p. 21).
- Choice of fabric, vinyl or leather (refer to p. 22).
- Gradual curve aluminium arm - ARMNEPT (refer to p. 20).
- High back executive - PHB.
- Medium back executive- PMB.

#### Weight:

- 120kg.

#### Warranty:

- 5 year.



\*100% of the foams in this product are Good Environmental Choice Australia Certified



# PORTSEA MEDIUM BACK



### Features:

- GECA certified foam.
- Aluminium arms with polyurethane arm pads.
- Antibacterial foam.
- Black Class 4 height adjustable gas lift.
- Chrome base with PU soft wheel castors.
- Cosmetic back stitching.
- Dual inner ply for added strength.
- Tilt lock mechanism with tension adjustment.

### Seat and back:

- Fully upholstered.

### Options:

- Alternate black and chrome bases (refer to p. 20).
- Alternate black and chrome gas lifts (refer to p. 21).
- Alternate castors or glides (refer to p. 20).
- Choice of fabric, vinyl or leather (refer to p. 22).
- Front pivot mechanism - MECH/MULTI (refer to p. 21).
- Gradual curve aluminium arm - ARMNEPT (refer to p. 20).
- High back - PHB.
- Visitor - PLBV/C.

### Weight:

- 120kg.

### Warranty:

- 5 year.

PMB



\*100% of the foams in this product are Good Environmental Choice Australia Certified



# PORTSEA HIGH BACK



PHB

### Features:

- GECA certified foam.
- Aluminium arms with polyurethane arm pads.
- Antibacterial foam.
- Black Class 4 height adjustable gas lift.
- Chrome base with PU soft wheel castors.
- Cosmetic back stitching.
- Dual inner ply for added strength.
- Tilt lock mechanism with tension adjustment.

### Seat and back:

- Fully upholstered.

### Options:

- Alternate black and chrome bases (refer to p. 20).
- Alternate black and chrome gas lifts (refer to p. 21).
- Alternate castors or glides (refer to p. 20).
- Choice of fabric, vinyl or leather (refer to p. 22).
- Front pivot mechanism - MECH/MULTI (refer to p. 21).
- Gradual curve aluminium arm - ARMNEPT (refer to p. 20).
- Medium back - PMB.
- Visitor - PLBV/C.

### Weight:

- 120kg.

### Warranty:

- 5 year.



\*100% of the foams in this product are Good Environmental Choice Australia Certified



# PRECEPT RANGE



PREHB

### Features:

- Aluminium narrow leg base with PU soft wheel castors.
- Black vinyl.
- Chrome Class 4 height adjustable gas lift.
- Cosmetic stitching.
- Fixed chrome arms with removable black arm pads.
- Infinite lock mechanism with tension adjustment.

### Seat and back:

- Fully upholstered .

### Options:

- Low back - PRELB.
- Visitor - PREV.

### Weight:

- 110kg.

### Warranty:

- 5 year.



PRELB



PREV





STV02

#### Features:

- GECA certified foam.
- Antibacterial foam.
- Back lumbar support.
- Black polypropylene arm pads.
- Commercial grade seat and back foam.
- Dual inner ply for added strength.

#### Frame:

- Cantilever - tubular steel.
- Chrome finish.

#### Seat and back:

- Fully upholstered.

#### Options:

- Choice of fabric, vinyl or leather (refer to p. 22)
- High back executive - STHB.
- Low back executive - STLB.

#### Weight:

- 120kg.

#### Warranty:

- 5 year.



\*100% of the foams in this product are Good Environmental Choice Australia Certified





STLB

#### Features:

- GECA certified foam.
- Aluminium arms with polyurethane arm pads.
- Antibacterial foam.
- Back lumbar support.
- Black Class 4 height adjustable gas lift with cover.
- Chrome base with black castors.
- Commercial grade seat and back foam.
- Dual inner ply for added strength.
- Tilt lock mechanism with tension adjustment.

#### Seat and back:

- Fully upholstered.

#### Options:

- Alternate black and chrome bases (refer to p. 20).
- Alternate black and chrome gas lifts (refer to p. 21).
- Alternate castors or glides (refer to p. 20).
- Choice of fabric, vinyl or leather (refer to p. 22).
- Front pivot mechanism - MECH/MULTI (refer to p. 21).
- Gradual curve aluminium arm - ARMNEPT (refer to p. 20).
- High back - STHB.
- Visitor - STV02.

#### Weight:

- 120kg.

#### Warranty:

- 5 year.



\*100% of the foams in this product are Good Environmental Choice Australia Certified



# STUDIO HIGH BACK



STHB

### Features:

- GECA certified foam.
- Aluminium arms with polyurethane arm pads.
- Antibacterial foam.
- Back lumbar support.
- Black Class 4 height adjustable gas lift with cover.
- Chrome base with black castors.
- Commercial grade seat and back foam.
- Dual inner ply for added strength.
- Tilt lock mechanism with tension adjustment.

### Seat and back:

- Fully upholstered.

### Options:

- Alternate black and chrome bases (refer to p. 20).
- Alternate black and chrome gas lifts (refer to p. 21).
- Alternate castors or glides (refer to p. 20).
- Choice of fabric, vinyl or leather (refer to p. 22).
- Front pivot mechanism - MECH/MULTI (refer to p. 21).
- Gradual curve aluminium arm - ARMNEPT (refer to p. 20).
- Low back - STL.B.
- Visitor - STV02.

### Weight:

- 120kg.

### Warranty:

- 5 year.



\*100% of the foams in this product are Good Environmental Choice Australia Certified







TLV

#### Features:

- GECA certified foam.
- Aluminium arms with polyurethane arm pads.
- Antibacterial foam.
- Back lumbar support.
- Commercial grade seat and back foam.
- Cosmetic back stitching.
- One piece ply.

#### Frame:

- Cantilever - tubular steel.
- Chrome finish.

#### Seat and back:

- Fully upholstered.

#### Options:

- Black powder coat finish - TLV/B (refer to p. 21).
- Choice of fabric, vinyl or leather (refer to p. 22).
- Gradual curve aluminium arm - ARMNEPT (refer to p. 20).
- High back executive - THB.
- Medium back executive - TMB.

#### Weight:

- 120kg.

#### Warranty:

- 5 year.



\*100% of the foams in this product are Good Environmental Choice Australia Certified





TMB

#### Features:

- GECA certified foam.
- Aluminium arms with polyurethane arm pads.
- Aluminium narrow leg base with black castors.
- Antibacterial foam.
- Back lumbar support.
- Black Class 4 height adjustable gas lift.
- Commercial grade seat and back foam.
- Cosmetic stitching.
- One piece ply.
- Tilt lock mechanism with tension adjustment.

#### Seat and back:

- Fully upholstered.

#### Options:

- Alternate black and chrome bases (refer to p. 20).
- Alternate black and chrome gas lifts (refer to p. 21).
- Alternate castors or glides (refer to p. 20).
- Choice of fabric, vinyl or leather (refer to p. 22).
- Front pivot mechanism - MECH/MULTI (refer to p. 21).
- Gradual curve aluminium arm - ARMNEPT (refer to p. 20).
- High back - THB.
- Visitor - TLV.

#### Weight:

- 120kg.

#### Warranty:

- 5 year.



\*100% of the foams in this product are Good Environmental Choice Australia Certified



# TIVOLI HIGH BACK



### Features:

- GECA certified foam.
- Aluminium arms with polyurethane arm pads.
- Aluminium narrow leg base with black castors.
- Antibacterial foam.
- Back lumbar support.
- Black Class 4 height adjustable gas lift.
- Commercial grade seat and back foam.
- Cosmetic stitching.
- One piece ply.
- Tilt lock mechanism with tension adjustment.

### Seat and back:

- Fully upholstered.

### Options:

- Alternate black and chrome bases (refer to p. 20).
- Alternate black and chrome gas lifts (refer to p. 21).
- Alternate castors or glides (refer to p. 20).
- Choice of fabric, vinyl or leather (refer to p. 22).
- Front pivot mechanism - MECH/MULTI (refer to p. 21).
- Gradual curve aluminium arm - ARMNEPT (refer to p. 20).
- Medium back - TMB.
- Visitor - TLV.

### Weight:

- 120kg.

### Warranty:

- 5 year.

THB



\*100% of the foams in this product are Good Environmental Choice Australia Certified



# ACCESSORIES

## ARM OPTIONS

**ARMALUM** Full curve aluminium arm with polyurethane pad.



**ARMNEPT** Gradual curve aluminium arm with polyurethane pad.



## BASES

### Standard - Black Bases

**BASE700B** 700mm Diam.



### Standard - Chrome Bases

**BASE700C** 700mm Diam.



### Narrow Leg Arch - Black Base

**BASENL700B** 700mm Diam.



### Narrow Leg Arch - Chrome Base

**BASENL660C** 660mm Diam.



## CASTORS

### Black Castors



**CAST50** 50mm Standard - 30kg.  
(AFRDI approved)

**CAST60** 60mm Standard - 40kg.  
(AFRDI approved)

**CASTF** 50mm Friction - 30kg.  
(restricts movement).

**CASTHD** 55mm Heavy Duty - 60kg.

**CASTLB** 50mm Load Brake - 30kg.  
(restricts movement when seated)

**CASTMB** 50mm Manual Brake - 30kg.  
(manually lockable to stop movement)

### Soft Wheel / PU Castors



**CASTSW** 50mm with PU Tread - 30kg.  
(AFRDI approved)

**CASTSWF** 50mm Friction with PU Tread - 30kg.  
(restricts movement). (AFRDI approved)

**CASTSWLB** 50mm Load Brake with PU Tread - 30kg.  
(restricts movement when seated).

**CASTSWULB** 50mm Unload Brake with PU Tread - 30kg.  
(restricts movement when unseated).

**CASTMB** 50mm Manual Brake with PU Tread - 30kg.  
(manually lockable to stop movement).

### Black Unhooded Caster



**CASTUH** 50mm Unhooded - 30kg.

### Chrome Castor



**CASTCHR** 50mm Chrome look Hood/Shroud - 30kg.

### Stainless Steel Hooded Castor



**CASTSS** 50mm Polished Stainless Steel

### Black Glide



**CASTGL** 57mm Diameter.

# ACCESSORIES

## FRAMES

**Black**



**CANTILEVER**  
30mm

**Chrome**



**CANTILEVER**  
30mm

## GAS LIFTS

**Gas Lifts - Black**



**GL80B** 80mm  
**GL100B** 100mm  
**GL140B** 140mm



**Gas Lifts - Chrome**



**GL80C** 80mm  
**GL100C** 100mm  
**GL140C** 140mm



## MECHANISMS

**MECH/MULTI**

5-position front pivot mechanism  
With tension adjustment.




**OSA products are manufactured to the highest standard and incorporate the following premium materials:**

- Commercial grade timber and steel frames.
- Premium commercial grade foam.
- Upholstered covers are overlapped where required to stop fraying.
- Upholstered covers are top stitched for additional strength where required.
- For a complete list of sizes and dimensions please visit [www.officeseating.com.au](http://www.officeseating.com.au)
- All products are suitable for multiple applications, ranging from but not limited to education, general office, healthcare and hospitality.

**Due to our policy of continuous product improvement, OSA Pty Ltd reserves the right to make changes on specifications without notice.**


## LEGEND

 **AFRDI Certified**  
(Australian Furnishing Research and Development Institute)

 **Antibacterial Foam**

 **Australian Made**

 **GECA Certified**  
(Good Environmental Choice Australia)

 **Suggested Weight Capacity**  
120

 **Warranty Period**  
5 YEAR

# FABRIC SUPPLIERS

Most commonly used fabric suppliers.



caprice.com.au



sustainablelivingfabrics.com.au



innova.com.au



svenskakj.com.au



instyle.com.au



vyfab.com



laine.com.au



warwick.com.au



macquarietextiles.com.au



wgshowroom.com.au



leatherco.com.au



wovenimage.com



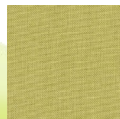
rimfabrics.com.au

# OSA HOUSE FABRICS

Fabric colours shown are an indication and should only be used as a guide.



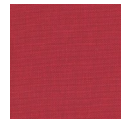
Birch



Citrus



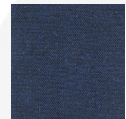
Fire



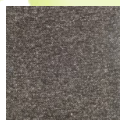
Poppy



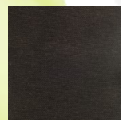
Teal



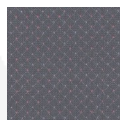
Navy



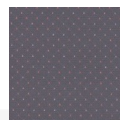
Falcon



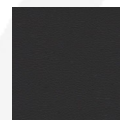
Carbon



Hathaway Charcoal



Hathaway Navy



Black Vinyl

**Performance:** Heavy Commercial

# OSA PRODUCT RANGE <sup>23</sup>



BEAM SEATING



CLERICAL



EDUCATION



HEALTHCARE



HOSPITALITY



OTTOMANS



SOFT FURNISHINGS



STOOLS



VISITOR

## NOTES

D I S T R I B U T E D B Y :

**OFFICE SEATING AUSTRALIA**

A U S T R A L I A N M A D E A N D O W N E D

(03) 9761 7110

[www.officeseating.com.au](http://www.officeseating.com.au)